

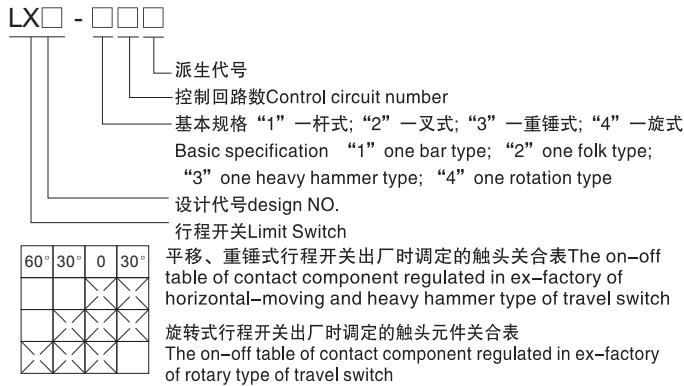
LX33 Series Limit Switch 系列行程开关

适用于交流50~60Hz; AC380V; DC220V; 电流10A的控制线路中, 作为起重机平移机构的行程限制及终端保护。正常工作在环境温度-5℃~+40℃; 环境湿度90%; 机械寿命100万次, 防护等级IP44; 符合IEC337-1, GB14048.5-2001标准。

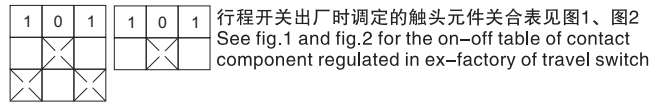
The product is to service at the electrical circuit of AC 50~60Hz, AC380V, DC220V and current of 10A to limit the travel of horizontal mechanism of the crane and execute terminal protection.

The nominal service conditions include an ambient temperature of -5℃~+40℃, ambient relative humidity of 90%, mechanical life of one million times and protection degree of IP44. It complies with the standard of IEC337-1 and GB14048.5-2001.

型号含义 Model definition

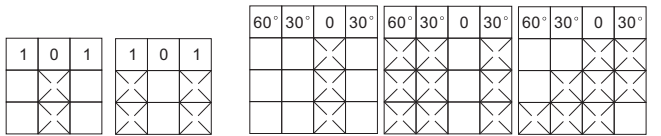


(图2)



(图1)

6.2.2 旋转式行程开关可供调整的触头元件关合表见图4
See fig.4 for the on-off table of adjustable contact component at rotary type of travel switch



(图3)

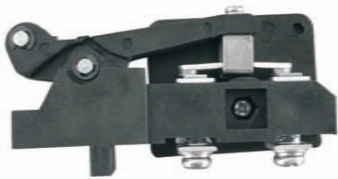
(图4)

行程开关的触头元件关合表可根据不同需要进行调整杆式、叉式及重锤式行程开关可供调整的触头元件关合表见图3, 触头开、闭动作完成的角为30°

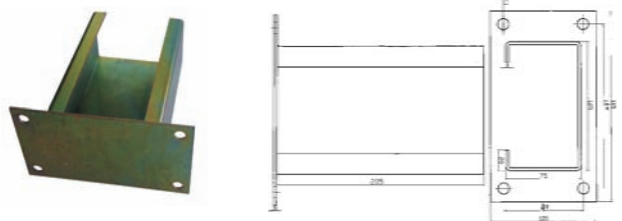
The on-off table of contact component of travel switch can be subject to adjustment when needing.

See fig.3 for adjustable contact component at lever type, folk type and heavy hammer type of travel switch. The angle for finish of making & breaking of contact is 30° .

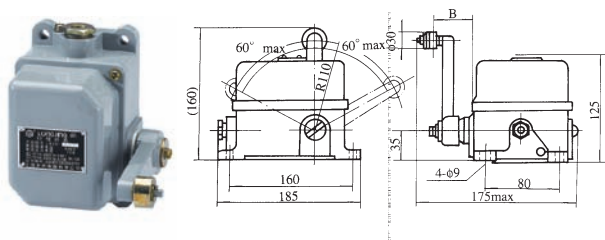
LX33-K



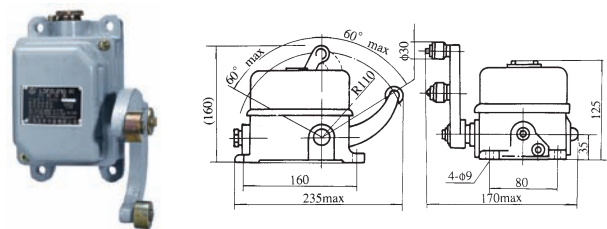
LX33安装架附件



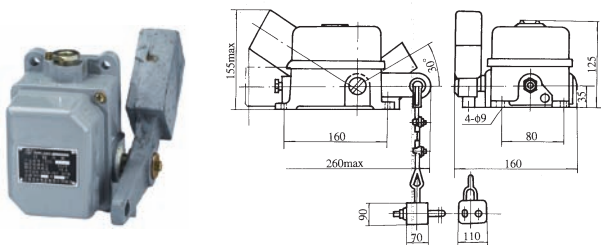
LX33-11、12 杆式行程开关外形及安装尺寸 Outline & installation size of lever type of travel switch



LX33-21、22 叉式行程开关外形及安装尺寸 Outline & installation size of folk type of travel switch



LX33-31、32 重锤式行程开关外形及安装尺寸 Outline & installation size of heavy hammer type of travel switch



LX33-41、42 旋转式行程开关外形及安装尺寸 Outline & installation size of rotary type of travel switch

